

# Utah GME Retention Report

Utah Medical Education Council

Prepared by: Jaron Halford, MPP, MPH



**Academic Year 2012-2013**

## Table of Contents

<b>Introduction</b> .....	2
<b>Retention Formula</b> .....	2
<b>Summary</b> .....	3
Summary of 1998-2013 Data .....	4
<b>Retention by Specialty</b> .....	5
Adult Psychiatry .....	7
Anesthesiology .....	8
Child Psychiatry .....	9
Dental .....	10
Dermatology .....	11
Diagnostic Radiology .....	12
Emergency Medicine .....	13
Family Medicine .....	14
General Surgery .....	19
General Surgery-PRELIM .....	20
Internal Medicine .....	21
Internal Medicine-PRELIM .....	22
Medical Genetics .....	23
Neurology .....	24
Neurosurgery .....	25
Obstetrics & Gynecology .....	26
Occupational Medicine .....	27
Ophthalmology .....	28
Orthopedics .....	29
Otolaryngology .....	30
Pathology .....	31
Pediatrics .....	32
Physical Rehabilitation .....	33
Plastic Surgery .....	34
Podiatry .....	35
Radiation Oncology .....	36
Transitional Year-LDS .....	37
Triple Board .....	38
Urology .....	39

# Utah's GME Program Retention Summary, 2014

## **Introduction**

The Utah Medical Education Council (UMEC) works with Utah's Graduate Medical Education (GME) institutions to enhance the physician supply within the state. Retaining GME program graduates who complete their residency and/or fellowship in Utah as practicing physicians is vital to maintaining an adequate physician workforce supply in Utah.

UMEC is charged with monitoring the retention for GME programs in Utah. The retention rates are determined based on data received from the McKay Dee Family Medicine residency program, St. Mark's Family Medicine residency program, Utah Valley Family Medicine residency program, and the University of Utah GME office.

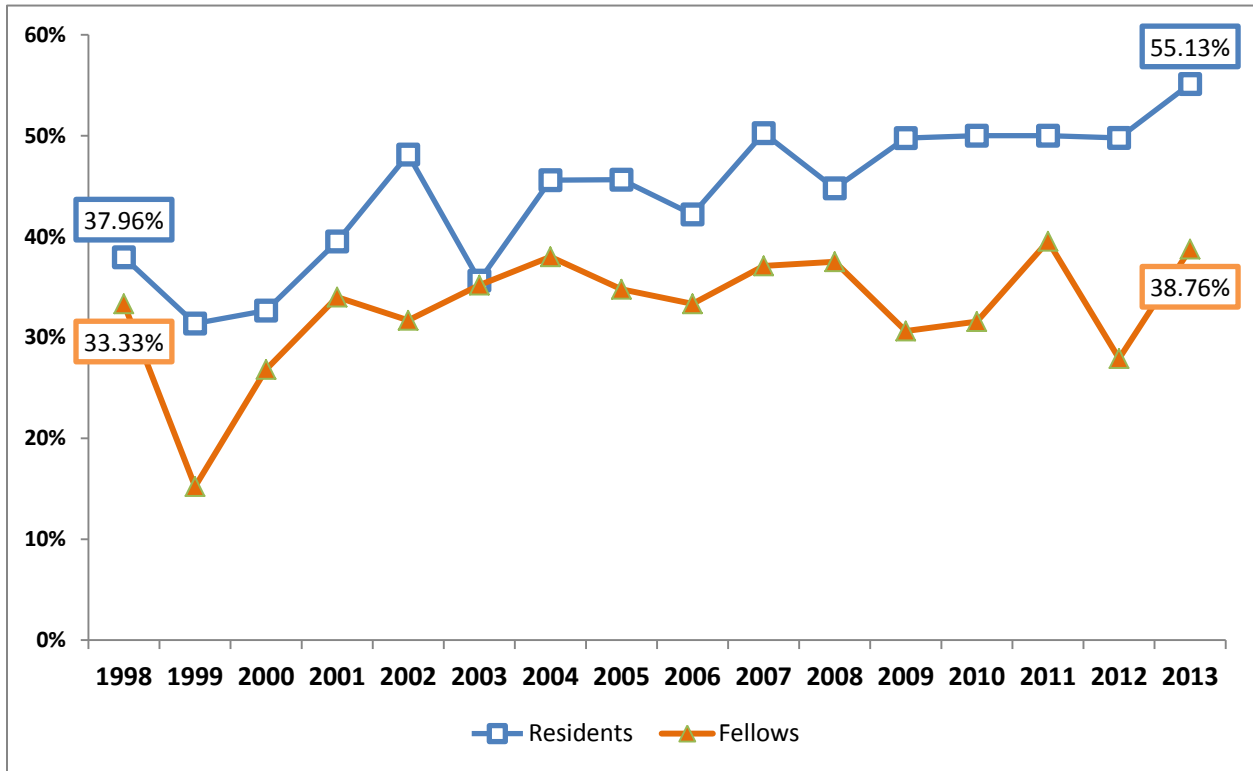
UMEC uses licensing data provided by the Utah Division of Occupational and Professional Licensing (DOPL), and works with each GME program in validating the accuracy of the information compiled by the UMEC. UMEC uses this data to insure the state of Utah will have an acceptable supply of highly qualified health care professionals who will continue to meet the growing needs of the state's population.

## **Retention Formula**

Active Utah Program Graduate Physicians, Practicing, Teaching or Conducting Research in Utah  
(Utah Program Graduates) - (Residents who DroppedOut or are Deceased )

- Retention is program specific.
- International Medical Graduates (IMGs) are included in the program graduate count.

**Figure 1: 1998-2013 Retention of Utah Trained Residents & Fellowship Programs**



The above graph illustrates the percentage of each graduating cohort in terms of those individuals who were Utah trained (either in a residency or fellowship program) and who are actively practicing in Utah as of January 2014. Individuals who are deceased, did not graduate, or are not practicing in Utah as of January 2014 are excluded from the retention graph above.

**Table 1: Total Retention from 1998-2013**

<b>Utah Trained Resident/Fellows</b>	<b>Residents/Fellows (1998-2013)</b>
Total Residents/Fellows (1998-2013)	<b>4,020*</b>
Active in Utah (2013)	<b>1,701 (42.3%)</b>
Total Active Licenses of Utah Trained Resident/Fellow (2013)	2,082
Active Outside of Utah (2013)	381 (18.3%)

\* This number includes the total number of licenses issued to residents and fellows who have graduated from an accredited program within Utah from 1998-2013. Residents/fellows who completed more than one program within Utah are counted as a graduate from each respective program.

**Table 2: Utah Trained Resident/Fellows Currently Practicing in the United States (2013)**

<b>Region*</b>	<b>Number of Utah Trained Resident/Fellows</b>	<b>Active Utah License</b>
West**	2,645 (947)	1,902 (201)
South	434	96
Midwest	342	61
Northeast	117	23
<b>TOTAL</b>	<b>3,538 (1,840)***</b>	<b>2,082 (381)</b>

\* Regions here taken from the *Bureau of Labor Statistics*. See the Bureau’s “Economy at a Glance” for region specific information.

\*\*Includes Utah in region. Parenthesis used for numbers that don’t include Utah.

\*\*\*Not all Utah trained residents/fellows are currently practicing within the United States. In addition, not all residents are practicing medicine at this time. Accordingly, this number is less than the total graduates minus current residents/fellows practicing in Utah.

**Table 3: Top Five States with Utah Trained Resident/Fellows (1998-2013)**

<b>State</b>	<b>Number of Utah Trained Resident/Fellows*</b>
California (West)	188
Washington (West)	143
Oregon (West)	142
Idaho (West)	125
Texas (South)	114
Colorado (West)	111

\* Number includes the total number of Utah trained residents/fellows working in the specific state – including both Utah licensed and non-licensed individuals.

**Table 4: 2010-2013 Residency Retention changes per specialty**

2010-2013 Residency Retention Percentage by Specialty (SNAPSHOT)						
Specialty Program	Residency Program 2010	Residency Program 2011	Residency Program 2012	Residency Program 2013	% Change 2012-13	Trend line
Adult Psychiatry	50.00%	50.00%	63.64%	100.00%	36.36%	
Anesthesiology	61.54%	78.57%	71.43%	81.25%	9.82%	
Child Psychiatry	50.00%	66.67%	100.00%	66.67%	-33.33%	
Dental	50.00%	30.00%	36.36%	60.00%	23.64%	
Dermatology	100.00%	0.00%	100.00%	66.67%	-33.33%	
Diagnostic Radiology	33.33%	83.33%	83.33%	66.67%	-16.67%	
Emergency Medicine	50.00%	12.50%	88.89%	44.44%	-44.44%	
Family Medicine Programs	81.82%	69.57%	52.00%	70.37%	18.37%	
Family Medicine U of U	90.91%	57.14%	50.00%	55.56%	5.56%	
Family Medicine St. Marks	100.00%	75.00%	0.00%	80.00%	80.00%	
Family Medicine Utah Valley	60.00%	83.33%	71.43%	57.14%	-14.29%	
Family Medicine McKay Dee	83.33%	66.67%	66.67%	100.00%	33.33%	
General Surgery (No Prelim)	37.50%	62.50%	0.00%	38.46%	38.46%	
Internal Medicine (No Prelim)	42.86%	74.07%	55.56%	52.94%	-2.61%	
Internal Med- Peds	33.33%	0.00%	20.00%	50.00%	30.00%	
Neurology	60.00%	80.00%	60.00%	60.00%	0.00%	
Neurosurgery	0.00%	50.00%	0.00%	0.00%	0.00%	
OBGYN	0.00%	60.00%	42.86%	40.00%	-2.86%	
Occupational Medicine	50.00%	100.00%	50.00%	40.00%	-10.00%	
Ophthalmology	66.67%	66.67%	66.67%	66.67%	0.00%	
Orthopedics	33.33%	50.00%	66.67%	0.00%	-66.67%	
Otolaryngology	0.00%	0.00%	33.33%	50.00%	16.67%	
Pathology	25.00%	40.00%	28.57%	50.00%	21.43%	
Pediatrics	65.22%	38.10%	35.71%	63.64%	27.92%	
Physical Rehabilitation	50.00%	33.33%	0.00%	55.56%	55.56%	
Plastic Surgery	0.00%	0.00%	50.00%	33.33%	-16.67%	
Podiatry	50.00%	25.00%	60.00%	0.00%	-60.00%	
Radiation Oncology	33.33%	0.00%	0.00%	0.00%	0.00%	
Triple Board	66.67%	66.67%	100.00%	0.00%	-100.00%	
Transitional Year LDS	33.33%	41.67%	16.67%	0.00%	-16.67%	
Urology	50.00%	0.00%	50.00%	0.00%	-50.00%	

**Table 5: 2004-2013 Residency/Fellowship Program Retention by Specialty**

Specialty	Residency Program (2004-2013)	Fellowship Program (2004-2013)	Specialty	Residency Program (2004-2013)	Fellowship Program (2004-2013)
Adult Psychiatry	82.7%	100.0%	Neurosurgery	10.7%	10.0%
Anesthesiology	64.8%	45.8%	OBGYN	47.1%	50.0%
Child Psychiatry	40.0%	50.0%	Occupational Medicine	48.4%	---
Dental	45.5%	---	Ophthalmology	44.4%	---
Dermatology	50.0%	---	Orthopedics	34.0%	19.0%
Diagnostic Radiology	51.0%	39.0%	Otolaryngology	20.0%	0.0%
Emergency Medicine	50.0%	---	Pathology	41.9%	37.3%
Family Medicine	65.1%	---	Pediatrics	46.2%	34.4%
Family Medicine - Sub specialty	---	26.8%	Physical Rehabilitation	46.5%	---
General Surgery	40.3%	27.6%	Plastic Surgery	16.0%	---
Internal Medicine	50.7%	38.5%	Podiatry	36.1%	---
IM Pediatrics	30.4%	---	Radiation Oncology	13.3%	---
Medical Genetics	---	75.0%	Triple Board	53.3%	---
Neurology	55.8%	51.4%	Urology	18.2%	---

**Table 6: Total Residency/ Fellowship Retention 2004-2013, 5 year intervals**

5 Year Retention	Total Completing Program	Retained in Utah	Percent Retained
2004-2008	1,247	542	43.5%
2005-2009	1,281	561	43.8%
2006-2010	1,326	585	44.1%
2007-2011	1,386	631	45.5%
2008-2012	1,448	650	44.9%
2009-2013	1,547	716	46.3%
<b>AVERAGE</b>	<b>1,373</b>	<b>614</b>	<b>44.7%</b>

## Retention by Specialty

### Adult Psychiatry – Residency and Fellowship Graduates

**Table 7: Adult Psychiatry Residency and Fellowship Retention (5 year periods), 2004-2013**

Retention Period	Residency			Fellowship		
	Total Graduates	Retained in Utah (2013)	% Retained in Utah (2013)	Total Graduates	Retained in Utah (2013)	% Retained in Utah (2013)
2004-2008	24	19	79.2%			
2005-2009	25	20	80.0%			
2006-2010	25	19	76.0%			
2007-2011	25	19	76.0%			
2008-2012	30	21	70.0%			
2009-2013	32	24	75.0%	2	2	100.0%
<b>AVERAGE</b>	<b>27</b>	<b>20</b>	<b>75.8%</b>	<b>2</b>	<b>2</b>	<b>100.0%</b>

**Table 8: Annual Adult Psychiatry Residency and Fellowship Retention, 2004-2013**

Retention Year	Residency			Fellowship		
	Total Graduates	Retained in Utah (2013)	% Retained in Utah (2013)	Total Graduates	Retained in Utah (2013)	% Retained in Utah (2013)
2004	7	7	100.0%			
2005	4	3	75.0%			
2006	4	2	50.0%			
2007	6	5	83.3%			
2008	3	2	66.7%			
2009	8	8	100.0%			
2010	4	2	50.0%			
2011	4	2	50.0%			
2012	11	7	63.6%			
2013	5	5	100.0%	2	2	100.0%
<b>TOTAL</b>	<b>56</b>	<b>43</b>	<b>76.8%</b>	<b>2</b>	<b>2</b>	<b>100.0%</b>

\*\* Fellowship programs contain: *Addiction Psychiatry*



## Anesthesiology – Residency and Fellowship Graduates

**Table 9: Anesthesiology Residency and Fellowship Retention (5 year periods), 2004-2013**

Retention Period	Residency			Fellowship		
	Total Graduates	Retained in Utah (2013)	% Retained in Utah (2013)	Total Graduates	Retained in Utah (2013)	% Retained in Utah (2013)
2004-2008	55	33	60.0%	6	4	66.7%
2005-2009	54	29	53.7%	10	5	50.0%
2006-2010	54	30	55.6%	13	4	30.8%
2007-2011	58	36	62.1%	13	4	30.8%
2008-2012	61	38	62.3%	14	3	21.4%
2009-2013	67	46	68.7%	18	7	38.9%
<b>AVERAGE</b>	<b>58</b>	<b>35</b>	<b>60.7%</b>	<b>12</b>	<b>5</b>	<b>36.5%</b>

**Table 10: Annual Anesthesiology Residency and Fellowship Retention, 2004-2013**

Retention Year	Residency			Fellowship		
	Total Graduates	Retained in Utah (2013)	% Retained in Utah (2013)	Total Graduates	Retained in Utah (2013)	% Retained in Utah (2013)
2004	11	8	72.7%	1	0	0.0%
2005	13	7	53.8%	1	1	100.0%
2006	10	5	50.0%	2	2	100.0%
2007	11	8	72.7%	2	1	50.0%
2008	10	5	50.0%	0	0	---
2009	10	4	40.0%	5	1	20.0%
2010	13	8	61.5%	4	0	0.0%
2011	14	11	78.6%	2	2	100.0%
2012	14	10	71.4%	3	0	0.0%
2013	16	13	81.3%	4	4	100.0%
<b>TOTAL</b>	<b>122</b>	<b>79</b>	<b>64.8%</b>	<b>24</b>	<b>11</b>	<b>45.8%</b>

\*\* Fellowship programs contain: *Anesthesia Pain Management* and *Pain Medicine*

## Child Psychiatry – Residency and Fellowship Graduates

**Table 11: Child Psychiatry Residency and Fellowship Retention (5 year periods), 2004-2013**

Retention Period	Residency			Fellowship		
	Total Graduates	Retained in Utah (2013)	% Retained in Utah (2013)	Total Graduates	Retained in Utah (2013)	% Retained in Utah (2013)
2004-2008	6	0	0.0%	2	1	50.0%
2005-2009	4	0	0.0%	4	2	50.0%
2006-2010	4	1	25.0%	4	2	50.0%
2007-2011	7	3	42.9%	2	1	50.0%
2008-2012	6	4	66.7%	2	1	50.0%
2009-2013	9	6	66.7%	2	1	50.0%
<b>AVERAGE</b>	<b>6</b>	<b>2</b>	<b>38.9%</b>	<b>3</b>	<b>1</b>	<b>50.0%</b>

**Table 12: Annual Child Psychiatry Residency and Fellowship Retention, 2004-2013**

Retention Year	Residency			Fellowship		
	Total Graduates	Retained in Utah (2013)	% Retained in Utah (2013)	Total Graduates	Retained in Utah (2013)	% Retained in Utah (2013)
2004	2	0	0.0%	0	0	---
2005	2	0	0.0%	0	0	---
2006	0	0	---	2	1	50.0%
2007	2	0	0.0%	0	0	---
2008	0	0	0.0%	0	0	---
2009	0	0	---	2	1	50.0%
2010	2	1	50.0%	0	0	0.0%
2011	3	2	66.7%	0	0	0.0%
2012	1	1	100.0%	0	0	0.0%
2013	3	2	66.7%	0	0	0.0%
<b>TOTAL</b>	<b>15</b>	<b>6</b>	<b>40.0%</b>	<b>4</b>	<b>2</b>	<b>50.0%</b>

\*\* Fellowship programs contain: *Child Psychiatry*

## Dental – Residency Graduates Only

**Table 13: Dentistry Residency Retention (5 year periods), 2004-2013**

Retention Period	Total Graduates	Retained in Utah (2013)	% Retained in Utah (2013)
<i>2004-2008</i>	48	21	43.8%
<i>2005-2009</i>	50	23	46.0%
<i>2006-2010</i>	50	25	50.0%
<i>2007-2011</i>	50	25	50.0%
<i>2008-2012</i>	51	24	47.1%
<i>2009-2013</i>	51	24	47.1%
<b>AVERAGE</b>	<b>50</b>	<b>24</b>	<b>47.3%</b>

**Table 14: Annual Dentistry Residency Retention, 2004-2013**

Retention Year	Total Graduates	Retained in Utah (2013)	% Retained in Utah (2013)
<i>2004</i>	8	4	50.0%
<i>2005</i>	10	3	30.0%
<i>2006</i>	10	3	30.0%
<i>2007</i>	10	5	50.0%
<i>2008</i>	10	6	60.0%
<i>2009</i>	10	6	60.0%
<i>2010</i>	10	5	50.0%
<i>2011</i>	10	3	30.0%
<i>2012</i>	11	4	36.4%
<i>2013</i>	10	6	60.0%
<b>TOTAL</b>	<b>99</b>	<b>45</b>	<b>45.5%</b>

## Dermatology – Residency Graduates Only

**Table 15: Dermatology Residency Retention (5 year periods), 2004-2013**

Retention Period	Total Graduates	Retained in Utah (2013)	% Retained in Utah (2013)
<i>2004-2008</i>	11	5	45.5%
<i>2005-2009</i>	12	6	50.0%
<i>2006-2010</i>	12	7	58.3%
<i>2007-2011</i>	13	6	46.2%
<i>2008-2012</i>	12	6	50.0%
<i>2009-2013</i>	13	7	53.8%
<b>AVERAGE</b>	<b>12</b>	<b>6</b>	<b>50.7%</b>

**Table 16: Annual Dermatology Residency Retention, 2004-2013**

Retention Year	Total Graduates	Retained in Utah (2013)	% Retained in Utah (2013)
<i>2004</i>	2	1	50.0%
<i>2005</i>	2	1	50.0%
<i>2006</i>	3	1	33.3%
<i>2007</i>	2	1	50.0%
<i>2008</i>	2	1	50.0%
<i>2009</i>	3	2	66.7%
<i>2010</i>	2	2	100.0%
<i>2011</i>	4	0	0.0%
<i>2012</i>	1	1	100.0%
<i>2013</i>	3	2	66.7%
<b>TOTAL</b>	<b>24</b>	<b>12</b>	<b>50.0%</b>

## Diagnostic Radiology – Residency and Fellowship Graduates

**Table 17: Diagnostic Radiology Residency and Fellowship Retention (5 year periods), 2004-2013**

Retention Period	Residency			Fellowship		
	Total Graduates	Retained in Utah (2013)	% Retained in Utah (2013)	Total Graduates	Retained in Utah (2013)	% Retained in Utah (2013)
2004-2008	22	7	31.8%	20	5	25.0%
2005-2009	26	9	34.6%	19	6	31.6%
2006-2010	25	9	36.0%	19	6	31.6%
2007-2011	28	14	50.0%	18	6	33.3%
2008-2012	29	18	62.1%	22	8	36.4%
2009-2013	29	19	65.5%	21	11	52.4%
<b>AVERAGE</b>	<b>27</b>	<b>13</b>	<b>47.8%</b>	<b>20</b>	<b>7</b>	<b>35.3%</b>

**Table 18: Annual Diagnostic Radiology Residency and Fellowship Retention, 2004-2013**

Retention Year	Residency			Fellowship		
	Total Graduates	Retained in Utah (2013)	% Retained in Utah (2013)	Total Graduates	Retained in Utah (2013)	% Retained in Utah (2013)
2004	2	1	50.0%	4	0	0.0%
2005	6	2	33.3%	3	0	0.0%
2006	3	0	0.0%	5	2	40.0%
2007	5	1	20.0%	3	2	66.7%
2008	6	3	50.0%	5	1	20.0%
2009	6	3	50.0%	3	1	33.3%
2010	5	2	40.0%	3	0	0.0%
2011	6	5	83.3%	4	2	50.0%
2012	6	5	83.3%	7	4	57.1%
2013	6	4	66.7%	4	4	100.0%
<b>TOTAL</b>	<b>51</b>	<b>26</b>	<b>51.0%</b>	<b>41</b>	<b>16</b>	<b>39.0%</b>

\*\* Fellowship programs contain: *Neurointerventional Surgery, Vascular/Interventional Radiology, Neuroradiology, and Nuclear Radiology.*

## Emergency Medicine – Residency Graduates Only

**Table 19: Emergency Medicine Residency Retention (5 year periods), 2004-2013**

Retention Period	Total Graduates	Retained in Utah (2013)	% Retained in Utah (2013)
2004-2008	9	5	55.6%
2005-2009	13	7	53.8%
2006-2010	24	12	50.0%
2007-2011	32	13	40.6%
2008-2012	40	21	52.5%
2009-2013	41	20	48.8%
<b>AVERAGE</b>	<b>27</b>	<b>13</b>	<b>49.1%</b>

**Table 20: Annual Emergency Medicine Residency Retention, 2004-2013**

Retention Year	Total Graduates	Retained in Utah (2013)	% Retained in Utah (2013)
2004	0	0	---
2005	0	0	---
2006	0	0	---
2007	1	0	0.0%
2008	8	5	62.5%
2009	4	2	50.0%
2010	11	5	45.5%
2011	8	1	12.5%
2012	9	8	88.9%
2013	9	4	44.4%
<b>TOTAL</b>	<b>50</b>	<b>25</b>	<b>50.0%</b>

## Family Medicine – Residency and Fellowship for ALL Programs

**Table 21: Family Medicine Residency and Fellowship Retention (5 year periods), 2004-2013**

Retention Period	Residency			Fellowship		
	Total Graduates	Retained in Utah (2013)	% Retained in Utah (2013)	Total Graduates	Retained in Utah (2013)	% Retained in Utah (2013)
2004-2008	131	81	61.8%	18	6	33.3%
2005-2009	125	82	65.6%	15	5	33.3%
2006-2010	119	83	69.7%	15	5	33.3%
2007-2011	117	82	70.1%	14	5	35.7%
2008-2012	115	79	68.7%	15	4	26.7%
2009-2013	118	81	68.6%	23	5	21.7%
<b>AVERAGE</b>	<b>121</b>	<b>81</b>	<b>67.3%</b>	<b>17</b>	<b>5</b>	<b>30.0%</b>

**Table 22: Annual Family Medicine Residency and Fellowship Retention, 2004-2013**

Retention Year	Residency			Fellowship		
	Total Graduates	Retained in Utah (2013)	% Retained in Utah (2013)	Total Graduates	Retained in Utah (2013)	% Retained in Utah (2013)
2004	27	14	51.9%	3	1	33.3%
2005	28	17	60.7%	4	2	50.0%
2006	25	17	68.0%	4	0	0.0%
2007	27	16	59.3%	3	1	33.3%
2008	24	17	70.8%	4	2	50.0%
2009	21	15	71.4%	0	0	---
2010	22	18	81.8%	4	2	50.0%
2011	23	16	69.6%	3	0	0.0%
2012	25	13	52.0%	4	0	0.0%
2013	27	19	70.4%	12	3	25.0%
<b>TOTAL</b>	<b>249</b>	<b>162</b>	<b>65.1%</b>	<b>41</b>	<b>11</b>	<b>26.8%</b>

\*\* Fellowship programs contain: *Family Medicine (OBGYN)* and *Sports Medicine*

## Family Medicine Cont. – Residency by Program

**Table 23: Utah Valley: Family Medicine Residency Retention (5 year periods), 2004-2013**

Retention Period	Total Graduates	Retained in Utah (2013)	% Retained in Utah (2013)
<i>2004-2008</i>	29	19	65.5%
<i>2005-2009</i>	30	23	76.7%
<i>2006-2010</i>	29	22	75.9%
<i>2007-2011</i>	29	23	79.3%
<i>2008-2012</i>	30	24	80.0%
<i>2009-2013</i>	32	24	75.0%
<b>AVERAGE</b>	<b>30</b>	<b>23</b>	<b>75.4%</b>

**Table 24: Utah Valley: Annual Emergency Medicine Residency Retention, 2004-2013**

Retention Year	Total Graduates	Retained in Utah (2013)	% Retained in Utah (2013)
<i>2004</i>	6	3	50.0%
<i>2005</i>	6	4	66.7%
<i>2006</i>	6	4	66.7%
<i>2007</i>	6	4	66.7%
<i>2008</i>	5	4	80.0%
<i>2009</i>	7	7	100.0%
<i>2010</i>	5	3	60.0%
<i>2011</i>	6	5	83.3%
<i>2012</i>	7	5	71.4%
<i>2013</i>	7	4	57.1%
<b>TOTAL</b>	<b>61</b>	<b>43</b>	<b>70.5%</b>



## Family Medicine Cont. – Residency by Program

**Table 25: University of Utah: Family Medicine Residency Retention (5 year periods), 2004-2013**

Retention Period	Total Graduates	Retained in Utah (2013)	% Retained in Utah (2013)
<i>2004-2008</i>	51	28	54.9%
<i>2005-2009</i>	45	25	55.6%
<i>2006-2010</i>	44	29	65.9%
<i>2007-2011</i>	41	27	65.9%
<i>2008-2012</i>	39	26	66.7%
<i>2009-2013</i>	40	26	65.0%
<b>AVERAGE</b>	<b>43</b>	<b>27</b>	<b>61.9%</b>

**Table 26: University of Utah: Annual Emergency Medicine Residency Retention, 2004-2013**

Retention Year	Total Graduates	Retained in Utah (2013)	% Retained in Utah (2013)
<i>2004</i>	11	6	54.5%
<i>2005</i>	12	6	50.0%
<i>2006</i>	10	6	60.0%
<i>2007</i>	10	5	50.0%
<i>2008</i>	8	5	62.5%
<i>2009</i>	5	3	60.0%
<i>2010</i>	11	10	90.9%
<i>2011</i>	7	4	57.1%
<i>2012</i>	8	4	50.0%
<i>2013</i>	9	5	55.6%
<b>TOTAL</b>	<b>91</b>	<b>54</b>	<b>59.3%</b>

**Family Medicine Cont. – Residency by Program**

**Table 27: St. Mark’s: Family Medicine Residency Retention (5 year periods), 2004-2013**

Retention Period	Total Graduates	Retained in Utah (2013)	% Retained in Utah (2013)
2004-2008	21	15	71.4%
2005-2009	20	16	80.0%
2006-2010	16	12	75.0%
2007-2011	17	12	70.6%
2008-2012	16	9	56.3%
2009-2013	16	10	62.5%
<b>AVERAGE</b>	<b>18</b>	<b>12</b>	<b>69.8%</b>

**Table 28: St. Marks: Annual Emergency Medicine Residency Retention, 2004-2013**

Retention Year	Total Graduates	Retained in Utah (2013)	% Retained in Utah (2013)
2004	4	2	50.0%
2005	4	4	100.0%
2006	3	3	100.0%
2007	5	3	60.0%
2008	5	3	60.0%
2009	3	3	100.0%
2010	0	0	---
2011	4	3	75.0%
2012	4	0	0.0%
2013	5	4	80.0%
<b>TOTAL</b>	<b>37</b>	<b>25</b>	<b>67.6%</b>

**Family Medicine Cont. – Residency by Program**

**Table 29: McKay Dee: Family Medicine Residency Retention (5 year periods), 2004-2013**

Retention Period	Total Graduates	Retained in Utah (2013)	% Retained in Utah (2013)
<i>2004-2008</i>	30	19	63.3%
<i>2005-2009</i>	27	19	70.4%
<i>2006-2010</i>	27	21	77.8%
<i>2007-2011</i>	27	21	77.8%
<i>2008-2012</i>	27	21	77.8%
<i>2009-2013</i>	27	22	81.5%
<b>AVERAGE</b>	<b>28</b>	<b>21</b>	<b>74.5%</b>

**Table 30: McKay Dee: Annual Emergency Medicine Residency Retention, 2004-2013**

Retention Year	Total Graduates	Retained in Utah (2013)	% Retained in Utah (2013)
<i>2004</i>	6	3	50.0%
<i>2005</i>	6	3	50.0%
<i>2006</i>	6	4	66.7%
<i>2007</i>	6	4	66.7%
<i>2008</i>	6	5	83.3%
<i>2009</i>	3	3	100.0%
<i>2010</i>	6	5	83.3%
<i>2011</i>	6	4	66.7%
<i>2012</i>	6	4	66.7%
<i>2013</i>	6	6	100.0%
<b>TOTAL</b>	<b>57</b>	<b>41</b>	<b>71.9%</b>

## General Surgery – Residency and Fellowship Graduates

**Table 31: General Surgery Residency and Fellowship Retention (5 year periods), 2004-2013**

Retention Period	Residency			Fellowship		
	Total Graduates	Retained in Utah (2013)	% Retained in Utah (2013)	Total Graduates	Retained in Utah (2013)	% Retained in Utah (2013)
2004-2008	30	15	50.0%	18	5	27.8%
2005-2009	31	15	48.4%	16	2	12.5%
2006-2010	29	13	44.8%	13	2	15.4%
2007-2011	33	15	45.5%	14	3	21.4%
2008-2012	35	12	34.3%	13	3	23.1%
2009-2013	42	14	33.3%	11	3	27.3%
<b>AVERAGE</b>	<b>33</b>	<b>14</b>	<b>42.0%</b>	<b>14</b>	<b>3</b>	<b>21.2%</b>

**Table 32: Annual General Surgery Residency and Fellowship Retention, 2004-2013**

Retention Year	Residency			Fellowship		
	Total Graduates	Retained in Utah (2013)	% Retained in Utah (2013)	Total Graduates	Retained in Utah (2013)	% Retained in Utah (2013)
2004	5	1	20.0%	3	3	100.0%
2005	10	5	50.0%	3	0	0.0%
2006	4	3	75.0%	4	1	25.0%
2007	5	3	60.0%	4	1	25.0%
2008	6	3	50.0%	4	0	0.0%
2009	6	1	16.7%	1	0	0.0%
2010	8	3	37.5%	0	0	---
2011	8	5	62.5%	5	2	40.0%
2012	7	0	0.0%	3	1	33.3%
2013	13	5	38.5%	2	0	0.0%
<b>TOTAL</b>	<b>72</b>	<b>29</b>	<b>40.3%</b>	<b>29</b>	<b>8</b>	<b>27.6%</b>

\*\* Fellowship programs contain: *Vascular Surgery, Surgical Critical Care, Pediatric Surgery, and Cardiothoracic Surgery.*

## General Surgery PRELIM- Residency Graduates Only

**Table 33: General Surgery PRELIM Residency Retention (5 year periods), 2004-2013**

Retention Period	Total Graduates	Retained in Utah (2013)	% Retained in Utah (2013)
2004-2008	10	4	40.0%
2005-2009	8	5	62.5%
2006-2010	7	4	57.1%
2007-2011	7	3	42.9%
2008-2012	10	6	60.0%
2009-2013	11	6	54.5%
<b>AVERAGE</b>	<b>9</b>	<b>5</b>	<b>52.8%</b>

**Table 34: Annual General PRELIM Surgery Residency Retention, 2004-2013**

Retention Year	Total Graduates	Retained in Utah (2013)	% Retained in Utah (2013)
2004	5	0	0.0%
2005	2	1	50.0%
2006	1	1	100.0%
2007	1	1	100.0%
2008	1	1	100.0%
2009	3	1	33.3%
2010	1	0	0.0%
2011	1	0	0.0%
2012	4	4	100.0%
2013	2	1	50.0%
<b>TOTAL</b>	<b>21</b>	<b>10</b>	<b>47.6%</b>

\*\* Residency programs contain: *Otolaryngology, Anesthesiology, General Surgery, Urology, Orthopedic Surgery, Diagnostic Radiology, and Plastic Surgery.*

## Internal Medicine – Residency and Fellowship Graduates

**Table 35: Internal Medicine Residency and Fellowship Retention (5 year periods), 2004-2013**

Retention Period	Residency			Fellowship		
	Total Graduates	Retained in Utah (2013)	% Retained in Utah (2013)	Total Graduates	Retained in Utah (2013)	% Retained in Utah (2013)
2004-2008	152	70	46.1%	114	46	40.4%
2005-2009	154	73	47.4%	117	46	39.3%
2006-2010	151	70	46.4%	121	48	39.7%
2007-2011	151	76	50.3%	136	54	39.7%
2008-2012	147	78	53.1%	138	49	35.5%
2009-2013	152	84	55.3%	151	56	37.1%
<b>AVERAGE</b>	<b>151</b>	<b>75</b>	<b>49.7%</b>	<b>130</b>	<b>50</b>	<b>38.5%</b>

**Table 36: Annual Internal Medicine Residency and Fellowship Retention, 2004-2013**

Retention Year	Residency			Fellowship		
	Total Graduates	Retained in Utah (2013)	% Retained in Utah (2013)	Total Graduates	Retained in Utah (2013)	% Retained in Utah (2013)
2004	34	16	47.1%	18	7	38.9%
2005	31	15	48.4%	21	7	33.3%
2006	27	14	51.9%	23	9	39.1%
2007	31	13	41.9%	26	13	50.0%
2008	29	12	41.4%	26	10	38.5%
2009	36	19	52.8%	21	7	33.3%
2010	28	12	42.9%	25	9	36.0%
2011	27	20	74.1%	38	15	39.5%
2012	27	15	55.6%	28	8	28.6%
2013	34	18	52.9%	39	17	43.6%
<b>TOTAL</b>	<b>304</b>	<b>154</b>	<b>50.7%</b>	<b>265</b>	<b>102</b>	<b>38.5%</b>

\*\* Fellowship programs contain: *Infectious Disease, Hematology and Oncology, Gastroenterology, Cardiology, Interventional Cardiology, Cardiology Transplant, Pulmonary Disease and Critical Care Medicine, Cardiology/Sleep Medicine, Rheumatology, Nephrology; Endocrinology, Diabetes and Metabolism; Geriatric Medicine, Sleep Medicine, Clinical Cardiac Electrophysiology, Bone Marrow Transplant, and Advanced Cardiac Imaging.*

## Internal Medicine PRELIM– Residency Graduates Only

**Table 37: Internal Medicine PRELIM Residency Retention (5 year periods), 2004-2013**

Retention Period	Total Graduates	Retained in Utah (2013)	% Retained in Utah (2013)
2004-2008	95	43	45.3%
2005-2009	95	39	41.1%
2006-2010	97	42	43.3%
2007-2011	97	44	45.4%
2008-2012	102	47	46.1%
2009-2013	105	53	50.5%
<b>AVERAGE</b>	<b>99</b>	<b>45</b>	<b>45.3%</b>

**Table 38: Annual Internal Medicine PRELIM Residency Retention, 2004-2013**

Retention Year	Total Graduates	Retained in Utah (2013)	% Retained in Utah (2013)
2004	20	12	60.0%
2005	18	9	50.0%
2006	22	7	31.8%
2007	18	10	55.6%
2008	17	5	29.4%
2009	20	8	40.0%
2010	20	12	60.0%
2011	22	9	40.9%
2012	23	13	56.5%
2013	20	11	55.0%
<b>TOTAL</b>	<b>200</b>	<b>96</b>	<b>48.0%</b>

\*\* Residency programs contain: *Radiology, Pain Medicine, Dermatology, Anesthesiology, Ophthalmology, Neurology, Physical Med and Rehab, Diagnostic Radiology, Radiation Oncology, OBGYN, Occupational Medicine, Aerospace Medicine, General Practitioner, and Internal Medicine*

## Medical Genetics – Fellowship Graduates Only

**Table 39: Medical Genetics Fellowship Retention (5 year periods), 2004-2013**

Retention Period	Total Graduates	Retained in Utah (2013)	% Retained in Utah (2013)
<i>2004-2008</i>	3	3	100.0%
<i>2005-2009</i>	3	3	100.0%
<i>2006-2010</i>	2	2	100.0%
<i>2007-2011</i>	2	1	50.0%
<i>2008-2012</i>	1	0	0.0%
<i>2009-2013</i>	1	0	0.0%
<b>AVERAGE</b>	<b>2</b>	<b>2</b>	<b>75.0%</b>

**Table 40: Annual Medical Genetics Fellowship Retention, 2004-2013**

Retention Year	Total Graduates	Retained in Utah (2013)	% Retained in Utah (2013)
<i>2004</i>	0	0	---
<i>2005</i>	1	1	100.0%
<i>2006</i>	1	1	100.0%
<i>2007</i>	1	1	100.0%
<i>2008</i>	0	0	---
<i>2009</i>	0	0	---
<i>2010</i>	0	0	---
<i>2011</i>	1	0	0.0%
<i>2012</i>	0	0	---
<i>2013</i>	0	0	---
<b>TOTAL</b>	<b>4</b>	<b>3</b>	<b>75.0%</b>



## Neurology – Residency and Fellowship Graduates

**Table 41: Neurology Residency and Fellowship Retention (5 year periods), 2004-2013**

Retention Period	Residency			Fellowship		
	Total Graduates	Retained in Utah (2013)	% Retained in Utah (2013)	Total Graduates	Retained in Utah (2013)	% Retained in Utah (2013)
2004-2008	17	8	47.1%	17	5	29.4%
2005-2009	19	10	52.6%	18	7	38.9%
2006-2010	19	11	57.9%	16	7	43.8%
2007-2011	24	15	62.5%	12	7	58.3%
2008-2012	25	15	60.0%	16	11	68.8%
2009-2013	26	16	61.5%	20	14	70.0%
<b>AVERAGE</b>	<b>22</b>	<b>13</b>	<b>57.7%</b>	<b>17</b>	<b>9</b>	<b>51.5%</b>

**Table 42: Annual Neurology Residency and Fellowship Retention, 2004-2013**

Retention Year	Residency			Fellowship		
	Total Graduates	Retained in Utah (2013)	% Retained in Utah (2013)	Total Graduates	Retained in Utah (2013)	% Retained in Utah (2013)
2004	4	1	25.0%	2	0	0.0%
2005	5	2	40.0%	5	2	40.0%
2006	0	0	---	6	1	16.7%
2007	4	3	75.0%	1	0	0.0%
2008	4	2	50.0%	3	2	66.7%
2009	6	3	50.0%	3	2	66.7%
2010	5	3	60.0%	3	2	66.7%
2011	5	4	80.0%	2	1	50.0%
2012	5	3	60.0%	5	4	80.0%
2013	5	3	60.0%	7	5	71.4%
<b>TOTAL</b>	<b>43</b>	<b>24</b>	<b>55.8%</b>	<b>37</b>	<b>19</b>	<b>51.4%</b>

\*\* Fellowship programs contain: *Clinical Neurophysiology, Child Neurology, Neurogenetics, Neuro Critical Care, and Vascular Neurology.*

## Neurosurgery – Residency and Fellowship Graduates

**Table 43: Neurosurgery Residency and Fellowship Retention (5 year periods), 2004-2013**

Retention Period	Residency			Fellowship		
	Total Graduates	Retained in Utah (2013)	% Retained in Utah (2013)	Total Graduates	Retained in Utah (2013)	% Retained in Utah (2013)
2004-2008	15	1	6.7%	10	1	10.0%
2005-2009	15	1	6.7%	9	1	11.1%
2006-2010	15	1	6.7%	9	2	22.2%
2007-2011	15	2	13.3%	10	2	20.0%
2008-2012	13	2	15.4%	11	2	18.2%
2009-2013	13	2	15.4%	10	1	10.0%
<b>AVERAGE</b>	<b>14</b>	<b>2</b>	<b>10.5%</b>	<b>10</b>	<b>2</b>	<b>15.3%</b>

**Table 44: Annual Neurosurgery Residency and Fellowship Retention, 2004-2013**

Retention Year	Residency			Fellowship		
	Total Graduates	Retained in Utah (2013)	% Retained in Utah (2013)	Total Graduates	Retained in Utah (2013)	% Retained in Utah (2013)
2004	3	1	33.3%	2	0	0.0%
2005	3	0	0.0%	1	0	0.0%
2006	2	0	0.0%	2	0	0.0%
2007	3	0	0.0%	2	0	0.0%
2008	4	0	0.0%	3	1	33.3%
2009	3	1	33.3%	1	0	0.0%
2010	3	0	0.0%	1	1	100.0%
2011	2	1	50.0%	3	0	0.0%
2012	1	0	0.0%	3	0	0.0%
2013	4	0	0.0%	2	0	0.0%
<b>TOTAL</b>	<b>28</b>	<b>3</b>	<b>10.7%</b>	<b>20</b>	<b>2</b>	<b>10.0%</b>

\*\* Fellowship programs contain: *Pediatric Neurosurgery, Spine, Skull Base, and Endovasc NeuroRadio.*

## Obstetrics & Gynecology – Residency and Fellowship Graduates

**Table 45: Obstetrics & Gynecology Residency and Fellowship Retention (5 year periods), 2004-2013**

Retention Period	Residency			Fellowship		
	Total Graduates	Retained in Utah (2013)	% Retained in Utah (2013)	Total Graduates	Retained in Utah (2013)	% Retained in Utah (2013)
2004-2008	24	12	50.0%	3	2	66.7%
2005-2009	26	14	53.8%	6	3	50.0%
2006-2010	26	11	42.3%	9	5	55.6%
2007-2011	26	11	42.3%	10	7	70.0%
2008-2012	28	12	42.9%	13	7	53.8%
2009-2013	27	12	44.4%	15	7	46.7%
<b>AVERAGE</b>	<b>26</b>	<b>12</b>	<b>45.9%</b>	<b>9</b>	<b>5</b>	<b>55.4%</b>

**Table 46: Annual Obstetrics & Gynecology Residency and Fellowship Retention, 2004-2013**

Retention Year	Residency			Fellowship		
	Total Graduates	Retained in Utah (2013)	% Retained in Utah (2013)	Total Graduates	Retained in Utah (2013)	% Retained in Utah (2013)
2004	3	2	66.7%	0	0	---
2005	5	3	60.0%	0	0	---
2006	5	3	60.0%	1	0	0.0%
2007	5	2	40.0%	0	0	---
2008	6	2	33.3%	2	2	100.0%
2009	5	4	80.0%	3	1	33.3%
2010	5	0	0.0%	3	2	66.7%
2011	5	3	60.0%	2	2	100.0%
2012	7	3	42.9%	3	0	0.0%
2013	5	2	40.0%	4	2	50.0%
<b>TOTAL</b>	<b>51</b>	<b>24</b>	<b>47.1%</b>	<b>18</b>	<b>9</b>	<b>50.0%</b>

\*\* Fellowship programs contain: *Reproductive Endocrinology and Infertility, Maternal Perinatal Medicine, and OB Family Planning.*

## Occupational Medicine – Residency Graduates Only

**Table 47: Occupational Medicine Residency Retention (5 year periods), 2004-2013**

Retention Period	Total Graduates	Retained in Utah (2013)	% Retained in Utah (2013)
2004-2008	14	6	42.9%
2005-2009	14	7	50.0%
2006-2010	13	7	53.8%
2007-2011	12	7	58.3%
2008-2012	15	8	53.3%
2009-2013	17	9	52.9%
<b>AVERAGE</b>	<b>14</b>	<b>7</b>	<b>51.8%</b>

**Table 48: Annual Occupational Medicine Residency Retention, 2004-2013**

Retention Year	Total Graduates	Retained in Utah (2013)	% Retained in Utah (2013)
2004	4	1	25.0%
2005	3	1	33.3%
2006	3	2	66.7%
2007	1	1	100.0%
2008	3	1	33.3%
2009	4	2	50.0%
2010	2	1	50.0%
2011	2	2	100.0%
2012	4	2	50.0%
2013	5	2	40.0%
<b>TOTAL</b>	<b>31</b>	<b>15</b>	<b>48.4%</b>

\*\* Residency programs contain: *Family Practice/Occupational Medicine, Physical Medicine & Rehab; Aerospace Medicine, Clinical Genetics, Internal Medicine, Occupational Medicine, Public Health; Otolaryngology, Preventative Medicine/Occupational Environmental Medicine, and Family Medicine.*

## Ophthalmology – Residency Graduates Only

**Table 49: Ophthalmology Residency Retention (5 year periods), 2004-2013**

Retention Period	Total Graduates	Retained in Utah (2013)	% Retained in Utah (2013)
<i>2004-2008</i>	12	4	33.3%
<i>2005-2009</i>	13	4	30.8%
<i>2006-2010</i>	14	6	42.9%
<i>2007-2011</i>	15	7	46.7%
<i>2008-2012</i>	15	8	53.3%
<i>2009-2013</i>	15	8	53.3%
<b>AVERAGE</b>	<b>14</b>	<b>6</b>	<b>44.0%</b>

**Table 50: Annual Ophthalmology Residency Retention, 2004-2013**

Retention Year	Total Graduates	Retained in Utah (2013)	% Retained in Utah (2013)
<i>2004</i>	2	0	0.0%
<i>2005</i>	2	0	0.0%
<i>2006</i>	2	1	50.0%
<i>2007</i>	3	1	33.3%
<i>2008</i>	3	2	66.7%
<i>2009</i>	3	0	0.0%
<i>2010</i>	3	2	66.7%
<i>2011</i>	3	2	66.7%
<i>2012</i>	3	2	66.7%
<i>2013</i>	3	2	66.7%
<b>TOTAL</b>	<b>27</b>	<b>12</b>	<b>44.4%</b>

## Orthopedics – Residency and Fellowship Graduates

**Table 51: Orthopedics Residency and Fellowship Retention (5 year periods), 2004-2013**

Retention Period	Residency			Fellowship		
	Total Graduates	Retained in Utah (2013)	% Retained in Utah (2013)	Total Graduates	Retained in Utah (2013)	% Retained in Utah (2013)
2004-2008	21	4	19.0%	37	8	21.6%
2005-2009	23	7	30.4%	31	6	19.4%
2006-2010	25	8	32.0%	38	5	13.2%
2007-2011	25	10	40.0%	44	8	18.2%
2008-2012	27	13	48.1%	49	11	22.4%
2009-2013	26	12	46.2%	63	11	17.5%
<b>AVERAGE</b>	<b>25</b>	<b>9</b>	<b>36.7%</b>	<b>44</b>	<b>8</b>	<b>18.7%</b>

**Table 52: Annual Orthopedics Residency and Fellowship Retention, 2004-2013**

Retention Year	Residency			Fellowship		
	Total Graduates	Retained in Utah (2013)	% Retained in Utah (2013)	Total Graduates	Retained in Utah (2013)	% Retained in Utah (2013)
2004	4	1	25.0%	6	2	33.3%
2005	4	1	25.0%	5	1	20.0%
2006	4	0	0.0%	6	2	33.3%
2007	4	1	25.0%	8	0	0.0%
2008	5	1	20.0%	12	3	25.0%
2009	6	4	66.7%	0	0	---
2010	6	2	33.3%	12	0	0.0%
2011	4	2	50.0%	12	5	41.7%
2012	6	4	66.7%	13	3	23.1%
2013	4	0	0.0%	26	3	11.5%
<b>TOTAL</b>	<b>47</b>	<b>16</b>	<b>34.0%</b>	<b>100</b>	<b>19</b>	<b>19.0%</b>

\*\* Fellowship programs contain: *Orthopedic Joint Surgery, Orthopedic Sarcoma, Pediatric Orthopedics, Orthopedic Spine Surgery, Orthopedic Sports Medicine, Orthopedic Spine Surgery/ Neurosurgery, Orthopedic Surgery- Hand, and Sarcoma Surgery.*

## Otolaryngology – Residency and Fellowship Graduates

**Table 53: Otolaryngology Residency and Fellowship Retention (5 year periods), 2004-2013**

Retention Period	Residency			Fellowship		
	Total Graduates	Retained in Utah (2013)	% Retained in Utah (2013)	Total Graduates	Retained in Utah (2013)	% Retained in Utah (2013)
2004-2008	11	5	45.5%	1	0	0.0%
2005-2009	11	2	18.2%	1	0	0.0%
2006-2010	10	2	20.0%	1	0	0.0%
2007-2011	11	1	9.1%	0	0	---
2008-2012	12	1	8.3%	0	0	---
2009-2013	14	3	21.4%	0	0	---
<b>AVERAGE</b>	<b>12</b>	<b>2</b>	<b>20.3%</b>	<b>1</b>	<b>0</b>	<b>0.0%</b>

**Table 54: Annual Otolaryngology Residency and Fellowship Retention, 2004-2013**

Retention Year	Residency			Fellowship		
	Total Graduates	Retained in Utah (2013)	% Retained in Utah (2013)	Total Graduates	Retained in Utah (2013)	% Retained in Utah (2013)
2004	2	0	0.0%	0	0	---
2005	2	0	0.0%	0	0	---
2006	3	1	33.3%	1	0	0.0%
2007	2	1	50.0%	0	0	---
2008	2	0	0.0%	0	0	---
2009	2	0	0.0%	0	0	---
2010	1	0	0.0%	0	0	---
2011	4	0	0.0%	0	0	---
2012	3	1	33.3%	0	0	---
2013	4	2	50.0%	0	0	---
<b>TOTAL</b>	<b>25</b>	<b>5</b>	<b>20.0%</b>	<b>1</b>	<b>0</b>	<b>0.0%</b>

## Pathology – Residency and Fellowship Graduates

**Table 55: Pathology Residency and Fellowship Retention (5 year periods), 2004-2013**

Retention Period	Residency			Fellowship		
	Total Graduates	Retained in Utah (2013)	% Retained in Utah (2013)	Total Graduates	Retained in Utah (2013)	% Retained in Utah (2013)
2004-2008	18	8	44.4%	14	5	35.7%
2005-2009	17	9	52.9%	26	9	34.6%
2006-2010	18	9	50.0%	33	12	36.4%
2007-2011	20	9	45.0%	35	13	37.1%
2008-2012	25	10	40.0%	38	15	39.5%
2009-2013	25	10	40.0%	45	17	37.8%
<b>AVERAGE</b>	<b>21</b>	<b>9</b>	<b>44.7%</b>	<b>32</b>	<b>12</b>	<b>37.2%</b>

**Table 56: Annual Pathology Residency and Fellowship Retention, 2004-2013**

Retention Year	Residency			Fellowship		
	Total Graduates	Retained in Utah (2013)	% Retained in Utah (2013)	Total Graduates	Retained in Utah (2013)	% Retained in Utah (2013)
2004	6	2	33.3%	1	1	100.0%
2005	3	1	33.3%	3	1	33.3%
2006	3	2	66.7%	2	0	0.0%
2007	2	1	50.0%	5	1	20.0%
2008	4	2	50.0%	3	2	66.7%
2009	5	3	60.0%	13	5	38.5%
2010	4	1	25.0%	10	4	40.0%
2011	5	2	40.0%	4	1	25.0%
2012	7	2	28.6%	8	3	37.5%
2013	4	2	50.0%	10	4	40.0%
<b>TOTAL</b>	<b>43</b>	<b>18</b>	<b>41.9%</b>	<b>59</b>	<b>22</b>	<b>37.3%</b>

\*\* Fellowship programs contain: *Molecular Genetic Pathology, Pediatric Pathology, Surgical Pathology, Cytopathology, Hematopathology, Medical Microbiology, Hematology/Oncology, and Gastrointestinal Pathology.*



## Pediatrics – Residency and Fellowship Graduates

**Table 57: Pediatrics Residency and Fellowship Retention (5 year periods), 2004-2013**

Retention Period	Residency			Fellowship		
	Total Graduates	Retained in Utah (2013)	% Retained in Utah (2013)	Total Graduates	Retained in Utah (2013)	% Retained in Utah (2013)
2004-2008	91	40	44.0%	42	17	40.5%
2005-2009	98	43	43.9%	40	13	32.5%
2006-2010	105	51	48.6%	48	16	33.3%
2007-2011	113	54	47.8%	44	16	36.4%
2008-2012	118	51	43.2%	46	14	30.4%
2009-2013	117	56	47.9%	54	16	29.6%
<b>AVERAGE</b>	<b>107</b>	<b>49</b>	<b>46.0%</b>	<b>46</b>	<b>15</b>	<b>33.6%</b>

**Table 58: Annual Pediatrics Residency and Fellowship Retention, 2004-2013**

Retention Year	Residency			Fellowship		
	Total Graduates	Retained in Utah (2013)	% Retained in Utah (2013)	Total Graduates	Retained in Utah (2013)	% Retained in Utah (2013)
2004	16	6	37.5%	11	5	45.5%
2005	16	7	43.8%	2	1	50.0%
2006	13	5	38.5%	14	4	28.6%
2007	23	13	56.5%	7	3	42.9%
2008	23	9	39.1%	8	4	50.0%
2009	23	9	39.1%	9	1	11.1%
2010	23	15	65.2%	10	4	40.0%
2011	21	8	38.1%	10	4	40.0%
2012	28	10	35.7%	9	1	11.1%
2013	22	14	63.6%	16	6	37.5%
<b>TOTAL</b>	<b>208</b>	<b>96</b>	<b>46.2%</b>	<b>96</b>	<b>33</b>	<b>34.4%</b>

\*\* Fellowship programs contain: *Internal Medicine, Pediatric Critical Care, Pediatric Emergency Medicine, Pediatrics Neonatal-Perinatal, Pediatric Pulmonology, Pediatric Cardiology, Pediatric Neonatology, Pediatric Infectious Disease, Pediatric Gastroenterology, Pediatric Hematology/Oncology, and Pediatric Neurosurgery.*

## Physical Rehabilitation – Residency Graduates Only

**Table 59: Physical Rehabilitation Residency Retention (5 year periods), 2004-2013**

Retention Period	Total Graduates	Retained in Utah (2013)	% Retained in Utah (2013)
<i>2004-2008</i>	19	9	47.4%
<i>2005-2009</i>	20	11	55.0%
<i>2006-2010</i>	18	9	50.0%
<i>2007-2011</i>	22	10	45.5%
<i>2008-2012</i>	19	8	42.1%
<i>2009-2013</i>	24	11	45.8%
<b>AVERAGE</b>	<b>20</b>	<b>10</b>	<b>47.5%</b>

**Table 60: Annual Physical Rehabilitation Residency Retention, 2004-2013**

Retention Year	Total Graduates	Retained in Utah (2013)	% Retained in Utah (2013)
<i>2004</i>	4	1	25.0%
<i>2005</i>	4	3	75.0%
<i>2006</i>	2	1	50.0%
<i>2007</i>	5	2	40.0%
<i>2008</i>	4	2	50.0%
<i>2009</i>	5	3	60.0%
<i>2010</i>	2	1	50.0%
<i>2011</i>	6	2	33.3%
<i>2012</i>	2	0	0.0%
<i>2013</i>	9	5	55.6%
<b>TOTAL</b>	<b>43</b>	<b>20</b>	<b>46.5%</b>

## Plastic Surgery – Residency Graduates Only

**Table 61: Plastic Surgery Residency Retention (5 year periods), 2004-2013**

Retention Period	Total Graduates	Retained in Utah (2013)	% Retained in Utah (2013)
<i>2004-2008</i>	12	2	16.7%
<i>2005-2009</i>	12	0	0.0%
<i>2006-2010</i>	13	0	0.0%
<i>2007-2011</i>	14	0	0.0%
<i>2008-2012</i>	14	1	7.1%
<i>2009-2013</i>	13	2	15.4%
<b>AVERAGE</b>	<b>13</b>	<b>1</b>	<b>6.4%</b>

**Table 62: Annual Plastic Surgery Residency Retention, 2004-2013**

Retention Year	Total Graduates	Retained in Utah (2013)	% Retained in Utah (2013)
<i>2004</i>	2	2	100.0%
<i>2005</i>	2	0	0.0%
<i>2006</i>	2	0	0.0%
<i>2007</i>	2	0	0.0%
<i>2008</i>	4	0	0.0%
<i>2009</i>	2	0	0.0%
<i>2010</i>	3	0	0.0%
<i>2011</i>	3	0	0.0%
<i>2012</i>	2	1	50.0%
<i>2013</i>	3	1	33.3%
<b>TOTAL</b>	<b>25</b>	<b>4</b>	<b>16.0%</b>

## Podiatry – Residency Graduates Only

**Table 63: Podiatry Residency Retention (5 year periods), 2004-2013**

Retention Period	Total Graduates	Retained in Utah (2013)	% Retained in Utah (2013)
<i>2004-2008</i>	20	6	30.0%
<i>2005-2009</i>	20	7	35.0%
<i>2006-2010</i>	19	7	36.8%
<i>2007-2011</i>	18	7	38.9%
<i>2008-2012</i>	19	8	42.1%
<i>2009-2013</i>	16	7	43.8%
<b>AVERAGE</b>	<b>19</b>	<b>7</b>	<b>37.5%</b>

**Table 64: Annual Podiatry Residency Retention, 2004-2013**

Retention Year	Total Graduates	Retained in Utah (2013)	% Retained in Utah (2013)
<i>2004</i>	3	0	0.0%
<i>2005</i>	5	2	40.0%
<i>2006</i>	5	1	20.0%
<i>2007</i>	4	2	50.0%
<i>2008</i>	3	1	33.3%
<i>2009</i>	3	1	33.3%
<i>2010</i>	4	2	50.0%
<i>2011</i>	4	1	25.0%
<i>2012</i>	5	3	60.0%
<i>2013</i>	0	0	---
<b>TOTAL</b>	<b>36</b>	<b>13</b>	<b>36.1%</b>

## Radiation Oncology – Residency Graduates Only

**Table 65: Radiation Oncology Residency Retention (5 year periods), 2004-2013**

Retention Period	Total Graduates	Retained in Utah (2013)	% Retained in Utah (2013)
2004-2008	8	1	12.5%
2005-2009	7	1	14.3%
2006-2010	10	2	20.0%
2007-2011	8	2	25.0%
2008-2012	9	2	22.2%
2009-2013	7	1	14.3%
<b>AVERAGE</b>	<b>8</b>	<b>2</b>	<b>18.4%</b>

**Table 66: Annual Radiation Oncology Residency Retention, 2004-2013**

Retention Year	Total Graduates	Retained in Utah (2013)	% Retained in Utah (2013)
2004	1	0	0.0%
2005	0	0	---
2006	3	0	0.0%
2007	1	0	0.0%
2008	3	1	33.3%
2009	0	0	---
2010	3	1	33.3%
2011	1	0	0.0%
2012	2	0	0.0%
2013	1	0	0.0%
<b>TOTAL</b>	<b>15</b>	<b>2</b>	<b>13.33%</b>

## Transitional Year -LDS

**Table 67: Transitional Year Residency Retention (5 year periods), 2004-2013**

Retention Year	Total Graduates	Retained in Utah (2013)	% Retained in Utah (2013)
2004	10	5	50.0%
2005	10	5	50.0%
2006	12	3	25.0%
2007	12	4	33.3%
2008	12	5	41.7%
2009	12	4	33.3%
2010	12	4	33.3%
2011	12	5	41.7%
2012	12	2	16.7%
2013	12	4	33.3%
<b>TOTAL</b>	<b>116</b>	<b>41</b>	<b>35.34%</b>

## Triple Board– Residency Graduates Only

**Table 68: Triple Board Residency Retention (5 year periods), 2004-2013**

Retention Period	Total Graduates	Retained in Utah (2013)	% Retained in Utah (2013)
2004-2008	7	3	42.9%
2005-2009	6	2	33.3%
2006-2010	8	3	37.5%
2007-2011	10	5	50.0%
2008-2012	9	5	55.6%
2009-2013	8	5	62.5%
<b>AVERAGE</b>	<b>8</b>	<b>4</b>	<b>47.9%</b>

**Table 69: Annual Triple Board Residency Retention, 2004-2013**

Retention Year	Total Graduates	Retained in Utah (2013)	% Retained in Utah (2013)
2004	2	1	50.0%
2005	1	1	100.0%
2006	1	0	0.0%
2007	2	1	50.0%
2008	1	0	0.0%
2009	1	0	0.0%
2010	3	2	66.7%
2011	3	2	66.7%
2012	1	1	100.0%
2013	0	0	---
<b>TOTAL</b>	<b>15</b>	<b>8</b>	<b>53.3%</b>

## Urology – Residency Graduates Only

**Table 70: Urology Residency Retention (5 year periods), 2004-2013**

Retention Period	Total Graduates	Retained in Utah (2013)	% Retained in Utah (2013)
<i>2004-2008</i>	12	1	8.3%
<i>2005-2009</i>	12	2	16.7%
<i>2006-2010</i>	12	2	16.7%
<i>2007-2011</i>	12	3	25.0%
<i>2008-2012</i>	12	2	16.7%
<i>2009-2013</i>	10	3	30.0%
<b>AVERAGE</b>	<b>12</b>	<b>2</b>	<b>18.6%</b>

**Table 71: Annual Urology Residency Retention, 2004-2013**

Retention Year	Total Graduates	Retained in Utah (2013)	% Retained in Utah (2013)
<i>2004</i>	2	0	0.0%
<i>2005</i>	2	0	0.0%
<i>2006</i>	2	0	0.0%
<i>2007</i>	2	1	50.0%
<i>2008</i>	4	0	0.0%
<i>2009</i>	2	1	50.0%
<i>2010</i>	2	0	0.0%
<i>2011</i>	2	1	50.0%
<i>2012</i>	2	0	0.0%
<i>2013</i>	2	1	50.0%
<b>TOTAL</b>	<b>22</b>	<b>4</b>	<b>18.2%</b>